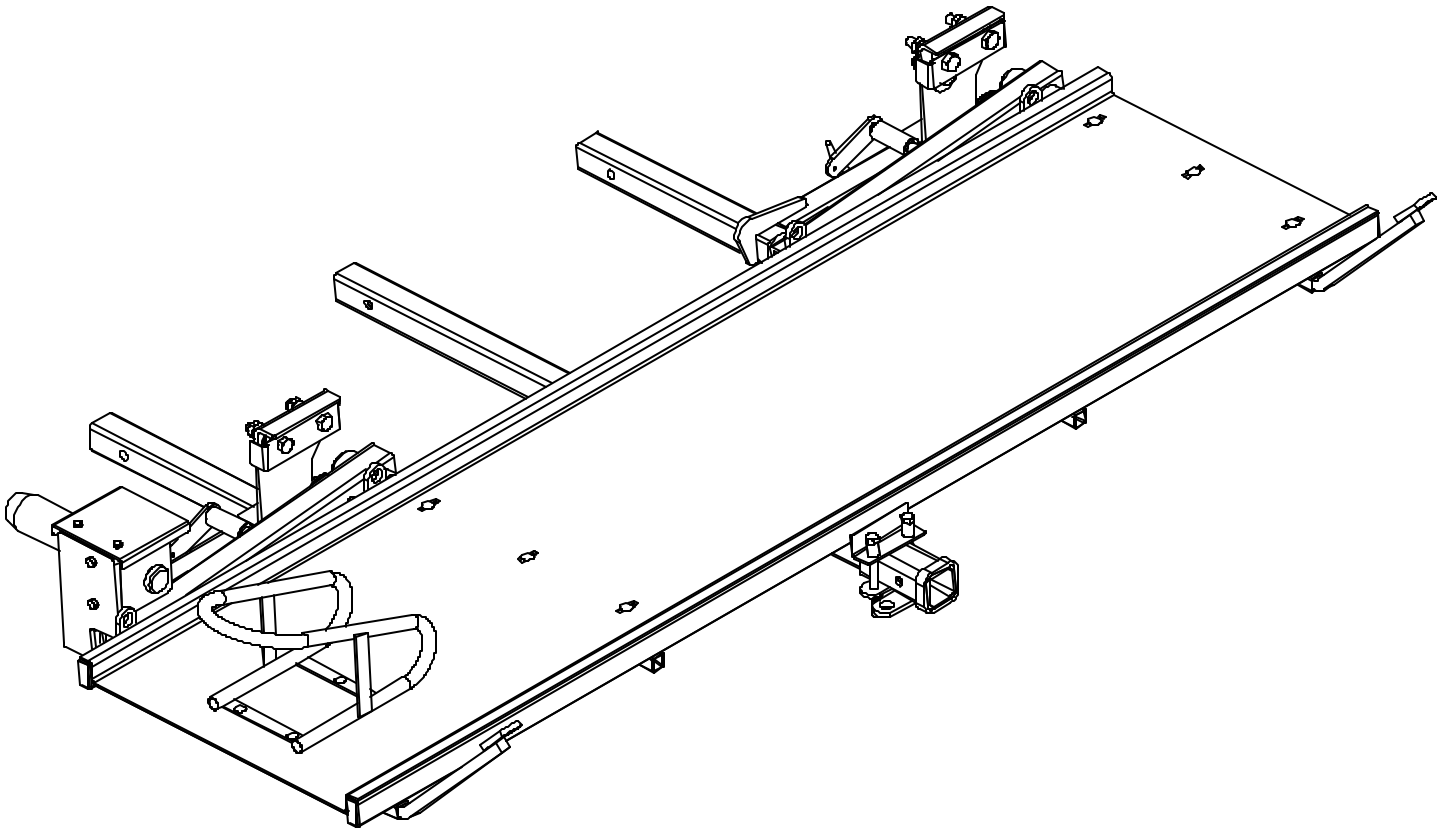




Serial No.

SportLift I™



OPERATOR, PARTS AND INSTALLATION MANUAL

SC4000 SportLift I™

Blue Ox Division, Automatic Equipment Mfg. Co. • One Mill Road, Industrial Park
Pender, Nebraska 68047 • Phone 402-385-3051 • Fax 402-385-3360 • www.blueox.us

Go RVing
It's A Trip



Strong As An Ox™

DO NOT INSTALL OR USE THIS EQUIPMENT UNTIL THE FOLLOWING OPERATING AND INSTALLATION INSTRUCTIONS HAVE BEEN READ AND UNDERSTOOD.

Congratulations in buying SportLift I from Blue Ox! SportLift I is the best lift out on the market today that has many features and conveniences. SportLift I has a whopping 1000 lbs. of carrying capacity, and can flat-tow up to 5000 lbs. SportLift 1 is safe, durable, and easy to use, that will give you many years of service.

IMPORTANT NOTES BEFORE INSTALLATION:

- Be sure to read the "Lift & Carrier Initial Information Sheets" included in this manual package to figure out if the SportLift I is applicable onto the motorhome chassis and to figure out how much weight will be added to the rear axle of the motorhome before installation.
- Never exceed the weight rating of the rear axle or tire load ratings of the RV. Doing so will cause dangerous driving conditions, and possible damage to the RV!
- Installation of receiver requires welding and some fabrication may be required. New mount plates (3/8") may have to be made because of all the chassis and trim configurations.
- The mount plates should be mounted directly to the main C-channels of the RV chassis for the most support.
- The hitch receiver needs to be welded by a certified welder.

SportLift Capacities

- LIFTING CAPACITY - 1000 LBS.
- FLAT-TOWING CAPACITY - 5000 LBS.
- CARGO HAULING LENGTH - .. 102 INCHES OR LESS

INSTALLING HITCH RECEIVER

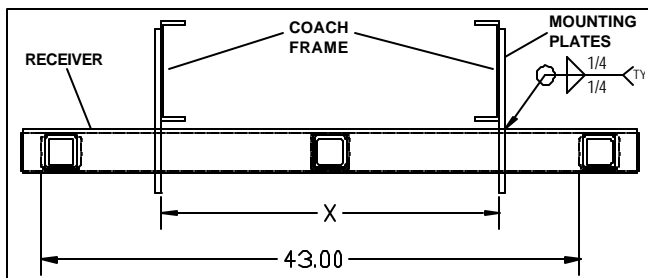


Fig. A

1. NOTE: (OPTIONAL) - SC9000 RECEIVER/MOUNT PLATE KIT is shown on page 2. The original hitch of the coach will need to be replaced with the SC9000 or a fabricated 3 receiver hitch. With the two outside receivers having a 43 inch center to center spacing. Once the original hitch is removed, measure between the two c-channels of the frame

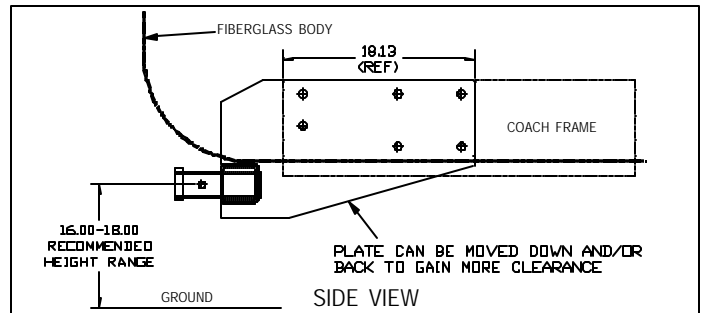


Fig. B

of the coach. What ever this measurement is, is what the distance between the mounting plates need to be as shown in Fig. A. **The mounting plates need to be welded by a certified welder. The hitch receiver needs to be positioned so the arm support assemblies will not hit the coach bumper or fiberglass body (Fig. B). The recommended height of the receivers is 16-18 inches from the ground to the center of the receivers. There may need to be some fabrication or holes drilled into the mounting plates to get the hitch receiver located in the appropriate spot. **Note: Make sure the hitch receiver is level before marking the holes on the C-channels of the coach.** If all 6 holes on the plate are not hitting the flat part of the c-channel, more 25/32" holes will need to be drilled. There should be at least 6 holes in each plate. Once all holes are drilled, bolt the hitch receiver assembly to the c-channels of the coach with 3/4-10 x 1 3/4 hex bolts, lockwashers, and hex nuts (included with SC9000).

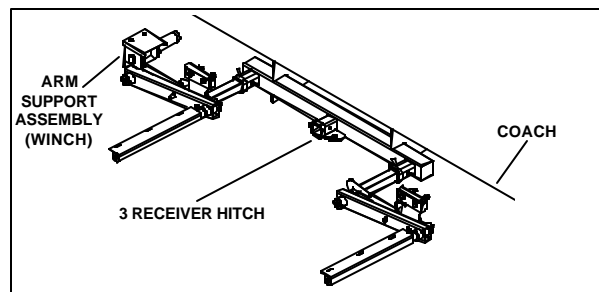


Fig. C

INSTALLING THE LIFT

2. Pin and clip the two arm support assemblies into the 3 receiver hitch (Fig. C). The arm support assembly with the winch goes on the driver's side of the coach.





Strong As An Ox™

3. Bolt the deck weldment to the arm support assemblies with six 3/8-16 x

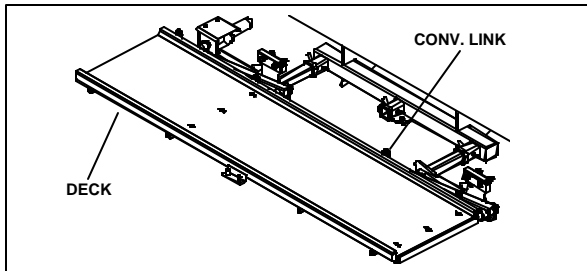


Fig. D

1 1/2 carriage bolts, hex nylock nuts, and washers. Be sure to position the deck so that the convenience links are toward the RV (Fig. D).

WIRING

4. Route the loose battery wires, positive and negative, towards the back of the coach using the supplied nylon wire ties and 20 ft. of black loom supplied with the lift. Connect the - or ground wire to a good solid ground, preferably using an existing bolt under the coach. Connect the + or positive wire directly to a 12 volt battery source on the coach. **NOTE:** When routing the positive and negative wires to the underside of the coach, keep in mind the exhaust pipes and any other hot surfaces that may cause the winch to electrically malfunction.

CABLE ROUTING

5. The hand held remote can now be plugged into the connectors on the winch. Once plugged in, the up and down button on the remote should now activate the cable both in and out. The cable of the winch now needs to be routed accordingly. **Look at the routing diagram on page 4 for direction.** Simply let out the cable and route the cable around the pulleys as shown in the diagram. Once around the last pulley, bolt the end of the cable to the anchor point with the 1/2-13 x 2 1/2" hex bolt, two plate washers, and 1/2-13 hex nylock nut. Be sure to sandwich the end of the cable in between the two plate washers.

OPERATING SPORTLIFT I

SAFETY NOTES:

- Make sure that hands and feet are away from all moving parts when operating SportLift I.
- Be aware that the deck of the lift rotates down towards the driver's side of the coach when lowering.

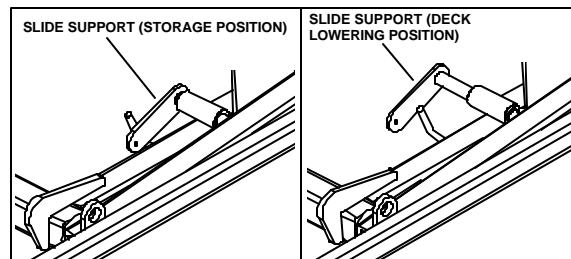


Fig. E

NOTE: All SportLifts are pre-tested and set at the factory.

6.

Be aware that the slide supports are in the storage position, so DON'T hold the remote button down for more than 1 or 2 seconds. Hold the "UP" button until the deck gets to its top position. The tension should now be off of the slide supports and should be able to be slid back so they are out of the way of the arms of the lift. If there is still tension on the slide supports, move the deck up or down until the pressure is off. Do the same to the other side. Once both slide supports are out of the way, lower the deck down to the ground.

WHEEL CHOCK INSTALLATION

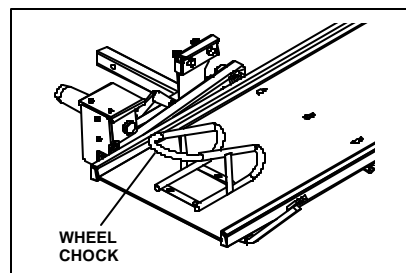


Fig. F

7. Note: Blue Ox recommends that the wheel chock is installed on the driver's side of the deck and the motorcycle is loaded from the passenger's side.

With the deck on the ground, drive the motorcycle onto the deck and position the motorcycle approximately in the middle of the deck. The motorcycle may have to be moved out 1 or 2 inches depending on the make and model of the motorcycle. Being too close to the RV can cause the handle bars or saddle bags to hit the lift. Before marking the wheel chock, make sure there isn't any cross members in the way



when drilling the holes. Once the wheel chock is located in the appropriate spot, mark the 3 holes out on the deck with a pencil. Center punch and drill the holes with a 11/32" drill bit. Bolt the wheel chock to the deck with three 5/16-18 x 1" carriage bolts, hex nuts, flat washers, and lock washers (Fig. E).

LOADING THE SPORTLIFT I

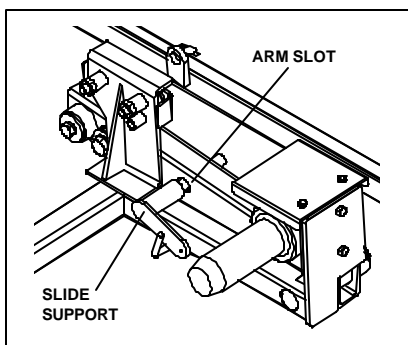


Fig. F

IMPORTANT NOTES:

- Cargo **CANNOT** be anymore then **1000 lbs or 102 inches** long.

- When lifting a motorcycle with the lift, the RV should be running. If the RV is not running, the winch will **NOT** be

able to operate at full power.

8. With the deck on the ground, load the cargo onto the deck of SportLift I. Once the cargo is positioned correctly on the deck, slide the tie downs into the square tubes on the back of the deck. There are 4 tubes that can be used (Fig. G). Use tie-down straps to fasten the cargo securely. There are 8 tie-down spots on SportLift I, 4 on the back, and 4 on the front. Use as many tie-down straps as it takes to securely fasten the cargo down to the deck. **Blue Ox is not responsible for any cargo that is NOT fastened down to SportLift I properly.**
9. Once the cargo is tied down, raise the deck with the hand held remote all the way up until the slide supports are lined up with the arm slots. Note: The passenger side slide support may have to be slid out into the arm first, then the driver's side, for the best operation. When both of the slide supports are through the arms, the deck can now be lowered down onto the slide supports. There should **NOT** be any weight on the winch cable when driving down the road!

10. If you are not planning to flat - tow behind SportLift I, then unplug the hand held remote from the winch, and store it in a safe dry place. If you are planning to flat-tow behind SportLift I, then continue to step 11.

FLAT-TOWING WITH SPORTLIFT I

11. **WARNING!!** - SportLift I is designed to **FLAT-TOW** vehicles. Towing trailers or boats will increase the down force thus exceeding the weight carrying capacity of SportLift I. Exceeding the capacity **WILL** lead to damage and possible product failure.

IMPORTANT NOTES:

- **BEFORE A VEHICLE CAN BE FLAT-TOWED, THE DECK MUST BE SUPPORTED BY THE SLIDE SUPPORTS AS DISCUSSED IN STEP 9.**

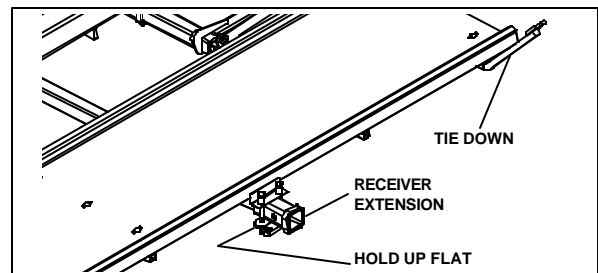


Fig. G

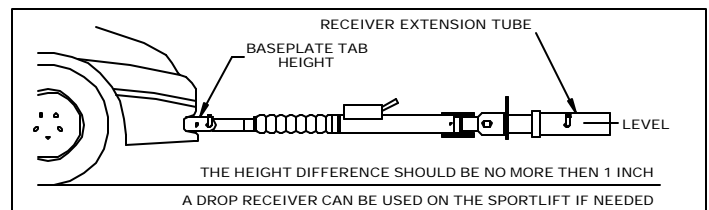


Fig. H

-SPORTLIFT I CAN FLAT-TOW A VEHICLE BEHIND IT THAT WEIGHS NO MORE THEN 5000 LBS.

To be able to flat-tow, pin the receiver extension into the center receiver hitch on the RV with the supplied 5/8" pin. Bolt both hold up flats (Item 13) underneath the receiver extension with four 1/2-13 x 6" hex bolts and 1/2-13 hex nylock nuts. See page 6 for reference. If the receiver extension cannot be pinned into the receiver hitch, raise the deck up as much as possible, then try to pin the extension. Once pinned,



Strong As An Ox™

lower the deck back down onto the slide supports. Don't tighten the hex nylock nuts all the way, this will make it much easier getting the receiver extension out when unloading the cargo.

12. Once the cargo is loaded onto SportLift I, strapped down securely, and pinned into place. The towed vehicle is now ready to be hooked up to the back of SportLift I.
13. Slide and pin the tow bar into the receiver of SportLift I. Hook up the towed vehicle to the tow bar, making sure the legs are locked into place.
14. Attach one set of safety cables from the RV to the convenience link on the receiver extension. Then attach another set of safety cables from the convenience links of the receiver extension to the convenience links of the towed vehicle.
15. SportLift I is now ready for towing.

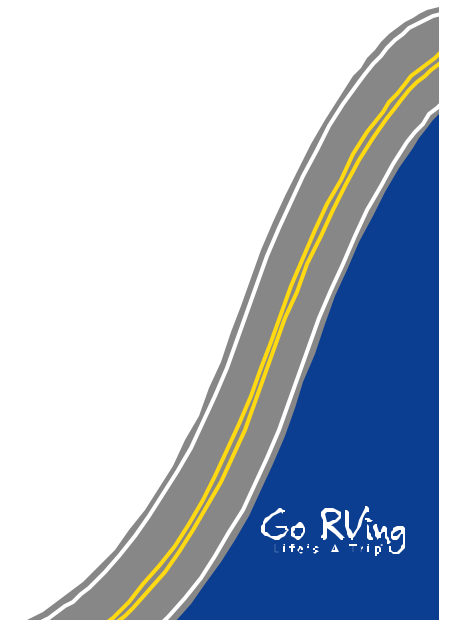
UNLOADING SPORTLIFT I

16. If a towed vehicle is hooked up, unhook it.
17. Unpin the receiver extension, and pull the extension out far enough so the deck can be lowered. If there is tension on the extension, hookup the hand held remote and lift the deck up until the extension slides out.
18. Move the passenger's side slide support out of the way, if there is tension, move the deck up or down. Do the same with the driver's side. The deck should now be able to move down to the ground.
19. The tie downs can now be loosened, have another person help hold the motorcycle if necessary.
20. The cargo can now be unloaded.

NOTE: DO NOT ALLOW THE WINCH MOTOR TO OVERHEAT. THE WINCH IS FOR INTERMITTENT USE ONLY.

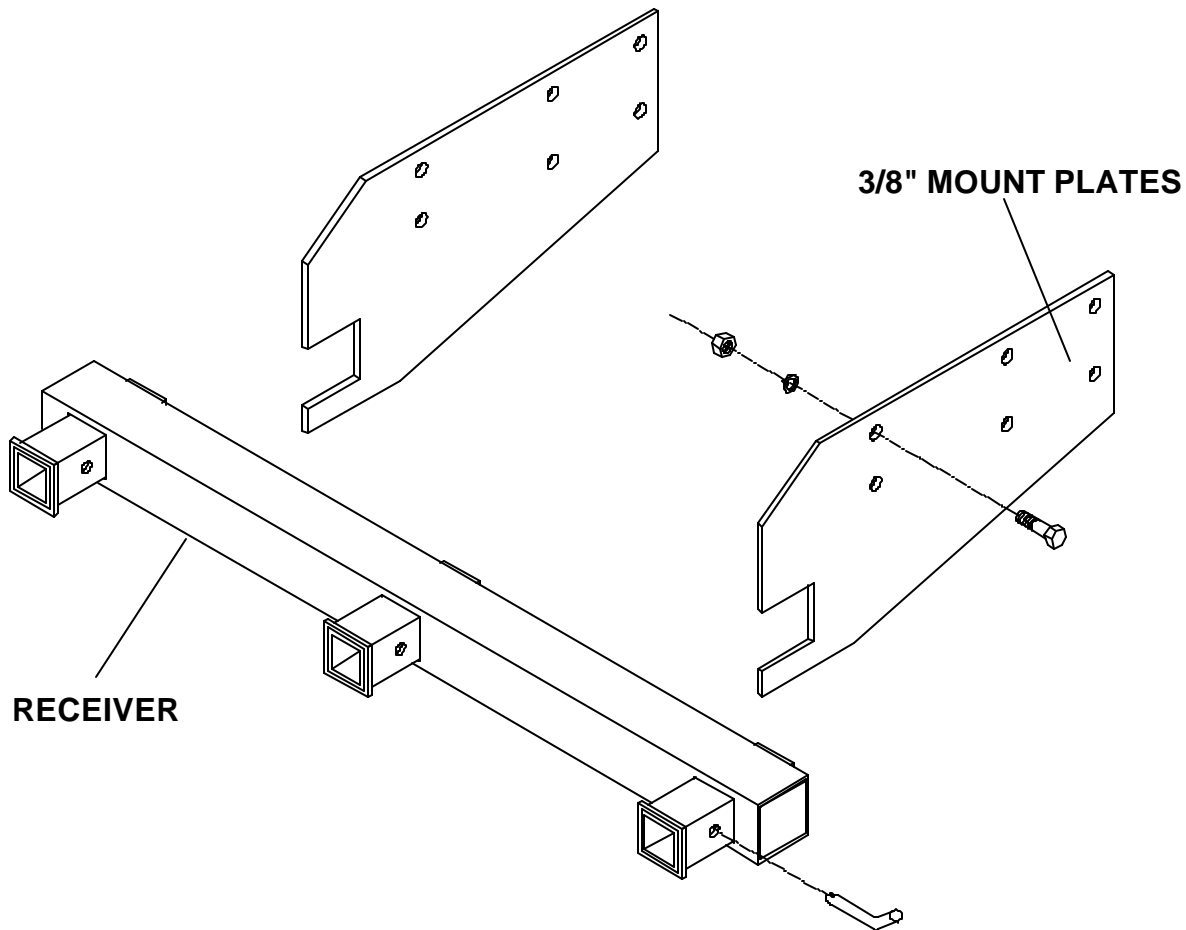
MAINTENANCE

Blue Ox uses grease zerks on the end of the arm supports. These grease zerks will need to be greased periodically depending on the amount of usage. Wiping SportLift I down periodically will help keep dust and dirt from building up.





SC9000 RECEIVER HITCH W/ MOUNT PLATES (OPTIONAL - HIGHLY RECOMMENDED)

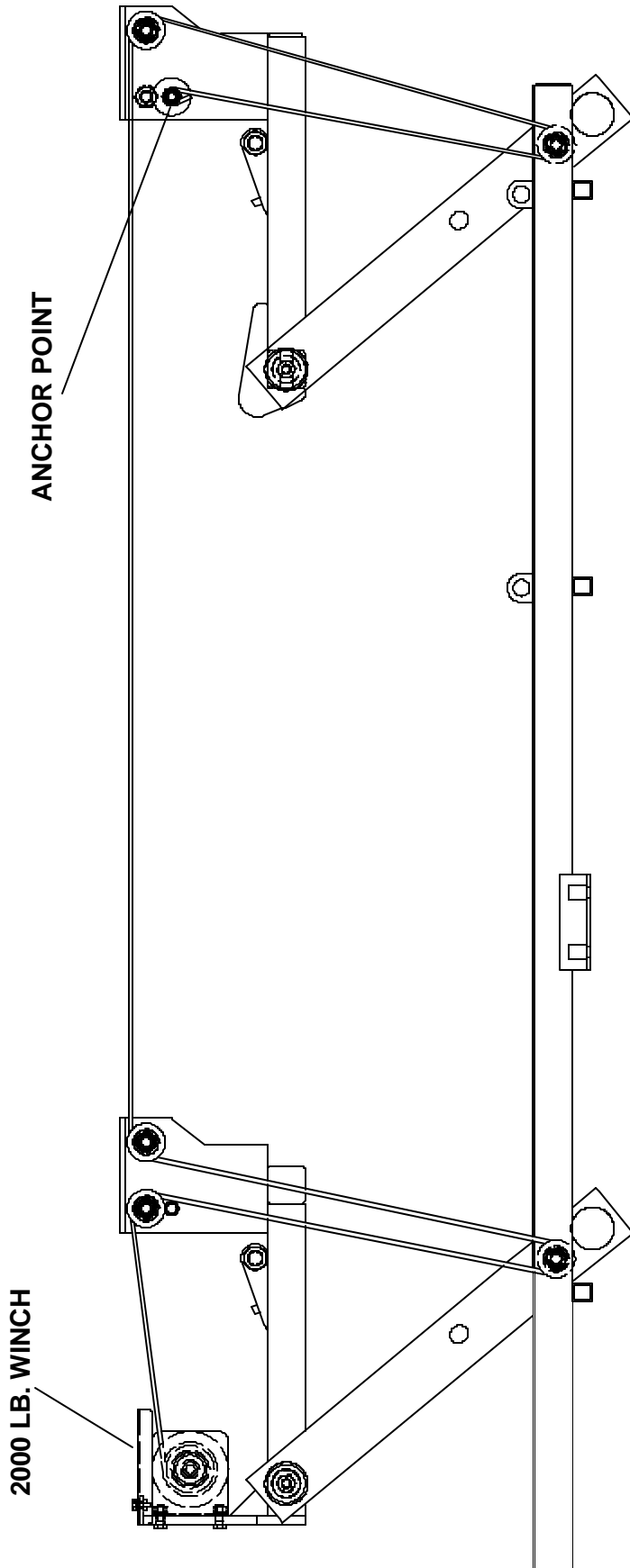


IMPORTANT NOTES:

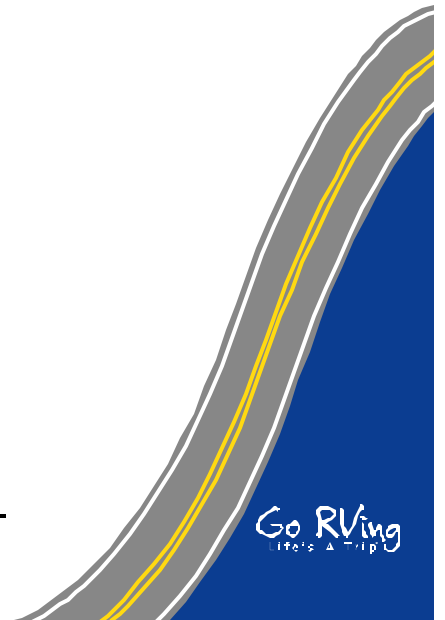
1. Be sure to use the "Initial Information Sheets" to figure the amount of weight that will be applied to the rear axle **BEFORE INSTALLATION!!** Never exceed the weight rating of the rear axle or tire load ratings. Doing so will cause dangerous driving conditions, and possible damage to the RV!
2. The mount plates should be mounted directly to the main C-Channels of the RV chassis for the most support.
3. The mount plates of the SC9000 may need to be modified to fit the specific RV chassis. New mount plates may have to be made because of all the different chassis and trim configurations. Have a qualified hitch shop install receiver.
4. If SC9000 is not used, the two outside receivers need to be located 43 inches center to center so the SC4000 will bolt together correctly.



CABLE ROUTING FOR SC4000 LIFT

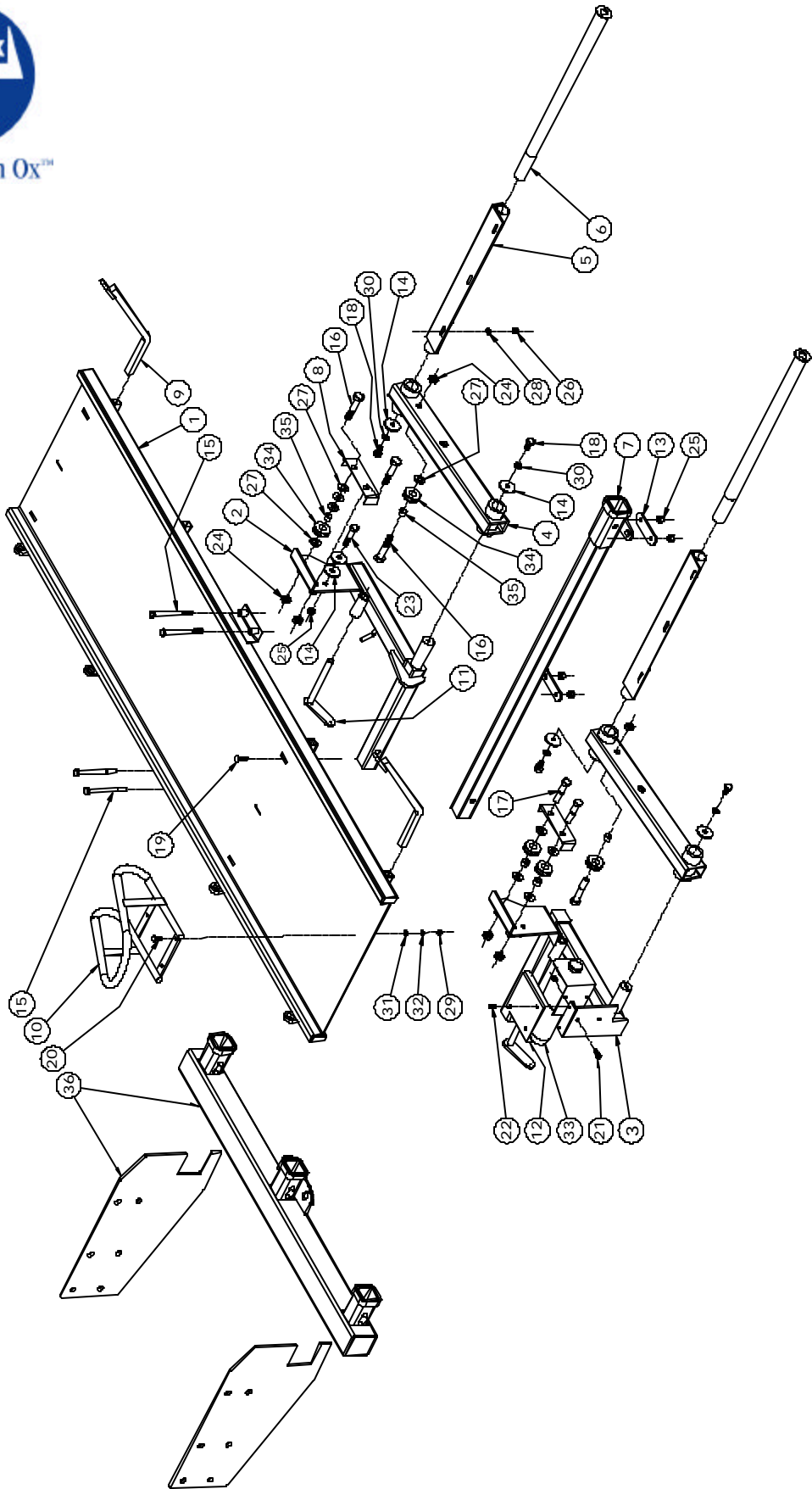


WARNING: NOT USING THE APPROPRIATE CABLE ROUTING WILL CAUSE DAMAGE TO THE WINCH OR LIFT.





Strong As An Ox™





IMPORTANT: Use only genuine factory replacement parts on your SportLift 1. Do not substitute homemade or nontypical parts. If parts are lost or in need of replacement, for your safety and the preservation of your SportLift 1. Order replacement parts through your nearest **Blue Ox** dealer or distributor.

Parts List

Ref. No.	Qty.	Part No.	Description
1	1	61-6054	Wldm't, Deck, SC4000
2	1	61-6063	Wldm't, Arm Support, PS
3	1	61-6064	Wldm't, Arm Support, DS
4	2	61-6043	Wldm't, Arm, Lift
5	2	61-6038	Wldm't, Mount, Deck
6	2	61-6060	Wldm't, Shaft, Lift
7	1	61-6039	Wldm't, Receiver Ext., SC4000
8	2	102-6543	Flat, Pulley Guard
9	2	61-6067	Wldm't, Tie Down
10	1	SC9001	Tire Support, 5 1/2"
11	2	299-0461	Wldm't, Slide Support, ZP
12	1	101-6663	Guard, Winch
13	2	102-6547	Flat, Hold Up, Extension
14	6	101-5147	Plate Washer, 1/2" hole, ZP
15	4	201-0772	1/2-13 x 6" Hex Head Bolt, Grd. 5, ZP
16	4	201-0725	5/8-11 x 3 1/2" Hex Head Bolt, Grd.5, ZP
17	2	201-0028	5/8-11 x 3" Hex Head Bolt, Grd.5, ZP
18	4	201-0060	1/2-13 x 1" Hex Head Bolt, Grd.5, ZP
19	6	201-0019	3/8-16 x 1 1/2" Carriage Head Bolt, Grd.5, ZP
20	3	201-0121	5/16-18 x 1" Carriage Bolt, Grd.5, ZP
21	2	201-0443	3/8-16 x 1" Hex Head Bolt, Grd.5, ZP
22	2	201-0050	1/4-20 x 3/4" Hex Head Bolt, Grd.5, ZP
23	1	201-0473	1/2-13 x 2 3/4" Hex Head Bolt, Grd.5, ZP
24	6	202-0163	5/8-11 Hex Jam Nut w/Nylon Insert, ZP
25	5	202-0094	1/2-13 Hex Nylon Insert Lock Nut, ZP
26	6	202-0090	3/8-16 Hex Nylon Insert Lock Nut, ZP
27	11	203-0006	5/8" Flat Washer, ZP
28	6	203-0003	3/8" Flat Washer, ZP
29	3	202-0002	5/16-18 Hex Head Nut, ZP
30	4	203-0012	1/2" Lock Washer, ZP
31	3	203-0002	5/16" Flat Washer, ZP
32	3	203-0009	5/16" Lock Washer, ZP
33	1	62-3554	Assy, Winch, 2000 LBS.
34	5	213-0004	Pulley, 2 Inch OD x 7/8 ID x 21/32"
35	5	205-0323	Bushing, 5/8 ID x 7/8 OD x 17/32"
36	-	SC9000	Receiver Hitch (Optional - Recommended) See page 2



Strong As An Ox™

SPORTLIFT I ONE YEAR WARRANTY

Automatic Equipment Manufacturing Co. ("Automatic") warrants to the first retail purchaser that each item of equipment manufactured by Automatic shall be free from defect in material and workmanship under normal use and service for one year.

Automatic will repair or replace any parts which (a) shall be returned to an authorized dealer, distributor, or the factory, with transportation charges prepaid, and (b) after examination by Automatic, are found to be defective. This warranty will not cover, in any way, any alleged damages caused by incorrect or improper installation, improper use, modification or neglect of product, or failure of the user to follow the guidelines contained in the instructional material provided by Automatic.

REPAIR OR REPLACEMENT AS SET FORTH IN THIS WARRANTY IS THE SOLE EXCLUSIVE REMEDY OF THE PURCHASER. AUTOMATIC SHALL NOT BE LIABLE FOR ANY INCIDENTAL OR CONSEQUENTIAL DAMAGES FOR BREACH OF ANY EXPRESS OR IMPLIED WARRANTY ON THIS PRODUCT. EXCEPT TO THE EXTENT PROHIBITED BY APPLICABLE LAW, ANY IMPLIED WARRANTY OF MERCHANTABILITY OR FITNESS FOR A PARTICULAR PURPOSE ON THIS PRODUCT IS LIMITED IN DURATION TO THE DURATION OF THIS WARRANTY.

Some states do not allow the exclusion or limitation of incidental or consequential damages, or allow limitations on how long an implied warranty lasts, so the above limitations or exclusions may not apply to you. This warranty gives you specific legal rights and you may also have other rights which vary from state to state.

Automatic reserves the right to make changes or add improvements to its products at any time without incurring any obligation to make such changes to previously manufactured equipment.

No liability is assumed for bodily injury that may be inflicted on the operator, spectator or general public who might be in the general area while this equipment is in use.

IMPORTANT: Coverage and performance under the foregoing warranty is conditioned upon the first retail purchaser completing and returning the customer registration card to Automatic within ten days of delivery date and upon the original serial number being visible on the product and unaltered. Automatic will not honor any warranty claims unless the warranty registration card is on file at Automatic's factory in Pender, Nebraska.

Automatic Equipment Manufacturing Co.
P.O. Box P, Pender, NE 68047
1/05



Strong As An Ox™

TO BE VALID, THE WARRANTY CARD MUST BE COMPLETED IN ITS ENTIRETY BY AN AUTHORIZED DISTRIBUTOR OR DEALER AND SENT TO AUTOMATIC EQUIPMENT MFG. CO., PENDER, NEBRASKA. FAILURE TO DO SO WILL VOID THE WARRANTY.

Repair parts may be ordered through your nearest Automatic dealer or distributor.

SERIAL NUMBER -

Product Safety Policy Statement

It is, and shall continue to be, a primary objective of Automatic Equipment Manufacturing Company to provide customers with safe and reliable products. Automatic will, and has, established safety procedures in product design, manufacture, promotion and sales; and will coordinate efforts to promote customer safety to the greatest extent possible. Each department has primary responsibility for the promotion of safety under the guidelines of the Product Safety Committee.

SC4000 SportLift I